



5 Applications Where Low-Pressure Foam is Best



ANTITRUST POLICY STATEMENT FOR SPRAY POLYURETHANE FOAM ALLIANCE MEETINGS

- It is and shall remain the policy of the Spray Polyurethane Foam Alliance (“SPFA”), and it is the continuing responsibility of every SPFA member company, SPFA meeting or event participant, as well as SPFA staff and leadership to comply in all respects with federal and state antitrust laws. No activity or discussion at any SPFA meeting or other function may be engaged in for the purpose of bringing about any understanding or agreement among members to (1) raise, lower or stabilize prices; (2) regulate production; (3) allocate markets; (4) encourage boycotts; (5) foster unfair or deceptive trade practices; (6) assist in monopolization; or (7) in any way violate or give the appearance of violating federal or state antitrust laws.
- Any concerns or questions regarding the meaning or applicability of this policy, as well as any concerns regarding activities or discussions at SPFA meetings should be promptly brought to the attention of SPFA’s Executive Director and/or its legal counsel.



Table of Contents

1. High- & Low-Pressure Foam:
Similarities and Differences
2. 5 Applications Where Low-Pressure
Foam Is Best
3. Safe Use of Low-Pressure Foam
4. Q&A



High- & Low-Pressure Spray Foam

SIMILARITIES & DIFFERENCES



Similarities

- 2-component polyurethane
- A is Isocyanate, and B is Polyol
- Open- and closed-cell formulas
- A range of densities



Differences

High-Pressure

- “Rig” based delivery
- 800-1600 psi & hi-temp
- High equipment cost
- Lower cost for high volume jobs
- Longer re-occupancy waiting period
- Supplied Air Respirator required
- Full wall cavity fill

Low-Pressure

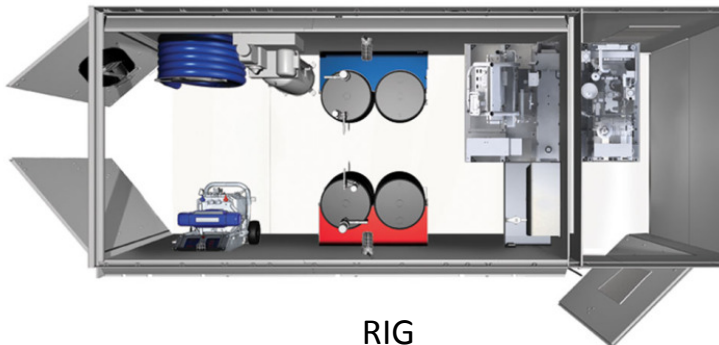
- Small, portable kits
- < 250 psi & room temp
- No equipment cost
- Lower cost for low volume jobs
- Faster re-occupancy
- Air purified respirator (may not be necessary)
- 2-in wall cavity fill
- Disposable



Some of the Brands

High-Pressure

- Demilec
- Covestro (Bayer)
- BASF
- Icynene
- Foametix
- Gaco Western



RIG

Low-Pressure

- Touch 'n Seal
- Dow Froth-Pak
- Fomo Handi-Foam
- Versi-Foam



KIT



Low-Pressure Spray Foam

5 APPLICATIONS WHERE LOW-PRESSURE IS BEST



A Caveat About Cavities

USA



FULL CAVITY FILL
AIR SEAL & INSULATE

Canada



PICTURE FRAME ONLY
AIR SEAL



I. Basement & Room Addition



- Relatively small area to cover

Kit Size*	Stud Pockets°
200	8
600	24

*Theoretical board feet

°Estimated

- Very little set up and clean up
- Kits are portable and disposable

I. Basement & Room Addition



- “Flash & batt”
- 1 or 2-in of foam + fiberglass batt
- Air seals and insulates
- Low cost -- high performance



2. Crawl Space

- Crawl space encapsulation is an ideal retrofit weatherization job for smaller low-pressure foam kits
 - Disposable kits, best for small areas/jobs
- Provides insulation
- Provides an air seal
- Acts as a vapor barrier
 - Eliminates moisture, mold and mildew
 - Hinders animals and insects

2. Crawl Space



Photo: Carolina Aire

2. Crawl Space



AFTER

Photo: Carolina Aire

NOTE: Local code may require covering with ignition or thermal barrier.

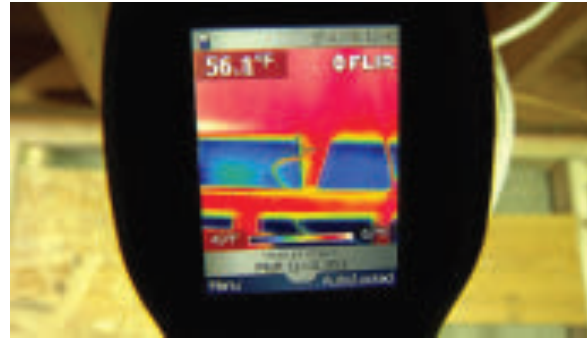


3. Rim Joist (Band Joist)

- Sits atop the sill plate of the basement wall
- Above grade and often not insulated or air sealed
- Even when “insulated” with fiberglass batts, there is no air seal
- A home’s key vulnerability
- Disposable kits, best for small jobs
 - 16”x10” in 20’x20’ = 66 board feet

3. Rim Joist (Band Joist)

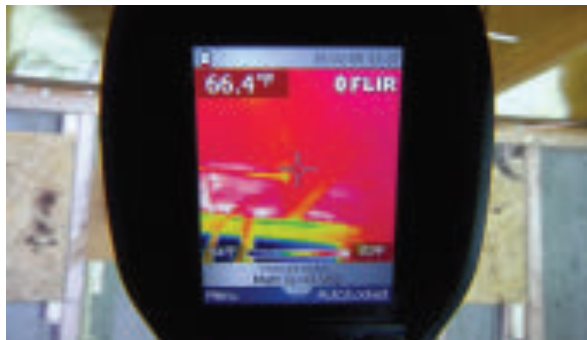
BEFORE



APPLICATION



AFTER

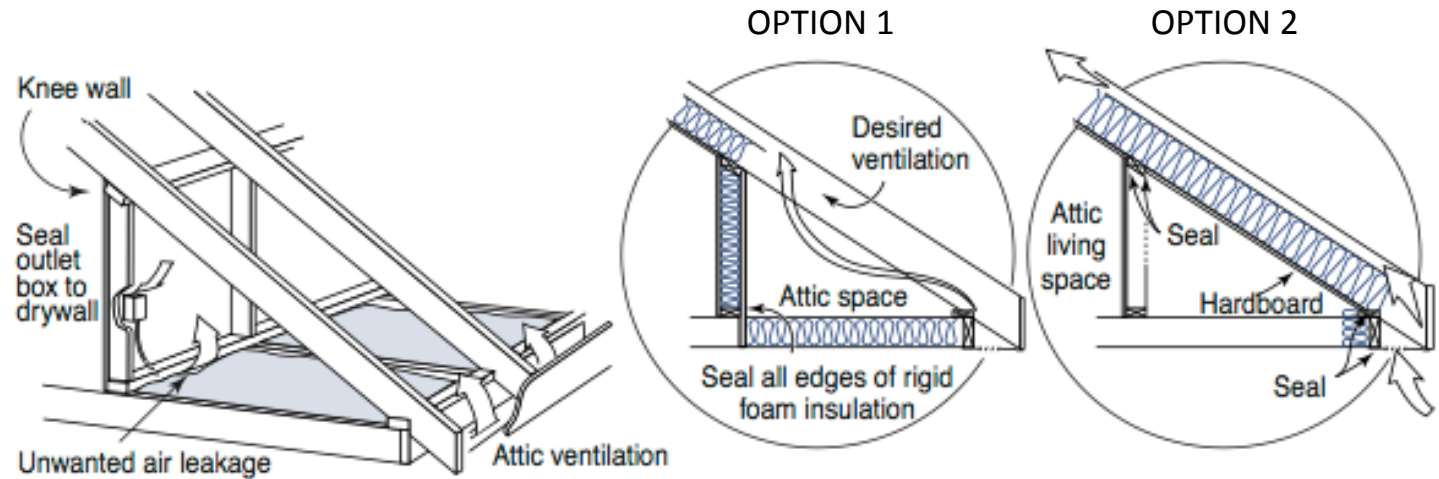


4. Wall & Floor Penetration



- Small, portable foam kits ideal for “spot work”
- Seal duct seams
- Access tight areas
- 2-component kits and 1-component cans

5. Attic Knee Wall



- In older homes, often uninsulated
- Even when sheathed, still need to be air sealed
- Small area is ideal for low-pressure



Low-Pressure Spray Foam

SAFE USE OF LOW PRESSURE FOAM



Personal Protection



COVER SKIN



SHIELD EYES



PROTECT LUNGS



VENTILATE ROOM



Proper Application

- Follow manufacturer's instructions
 - Use spray foam in open areas, not closed cavities – Heat/pressure
 - May need to apply in layers
 - Foam thickness restriction
- Fire rating
 - Check local building code requirements
 - May require fire rating, such as E-84
 - Make sure the product complies with the code



Low-Pressure Spray Foam

QUESTION & ANSWER



THANK YOU!



ANTITRUST POLICY STATEMENT FOR SPRAY POLYURETHANE FOAM ALLIANCE MEETINGS

- It is and shall remain the policy of the Spray Polyurethane Foam Alliance (“SPFA”), and it is the continuing responsibility of every SPFA member company, SPFA meeting or event participant, as well as SPFA staff and leadership to comply in all respects with federal and state antitrust laws. No activity or discussion at any SPFA meeting or other function may be engaged in for the purpose of bringing about any understanding or agreement among members to (1) raise, lower or stabilize prices; (2) regulate production; (3) allocate markets; (4) encourage boycotts; (5) foster unfair or deceptive trade practices; (6) assist in monopolization; or (7) in any way violate or give the appearance of violating federal or state antitrust laws.
- Any concerns or questions regarding the meaning or applicability of this policy, as well as any concerns regarding activities or discussions at SPFA meetings should be promptly brought to the attention of SPFA’s Executive Director and/or its legal counsel.